



Communication
SYSTEMS SOLUTIONS

**Introducing CSS
Communication Systems
Solutions, LLC
Lincoln, NE**

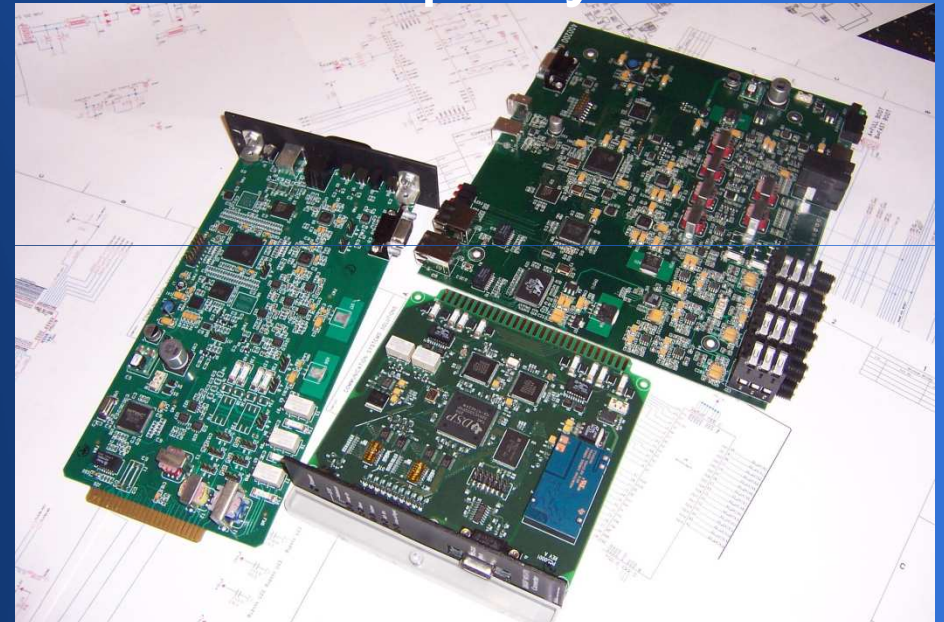


Communication
SYSTEMS SOLUTIONS

Who is CSS?

- CSS is an Engineering Design Company
- CSS is a Contract Manufacturing Company
- CSS is a Direct to Customer Company

**CSS is here to
work with your
Company**





Communication
SYSTEMS SOLUTIONS

CSS History

- Communication Systems Solutions, LLC (CSS) has been in business since September of 2004.
- In September of 2006 CSS became a full time endeavor for its two owners.
- A third partner was added in January of 2007.
- In the spring of 2007, CSS purchased a surface mount PCB assembly line, adding new equipment in 4Q2010
- In the Fall of 2009, CSS launched its own precision digital clock product line. CSS-Timemachines
- As of Sep 2010, CSS is expanding ENG and MFG!



Communication
SYSTEMS SOLUTIONS

Owner Bios

- Doug Ehlers has a Bachelors degree in Mechanical Engineering and a Masters in Electrical engineering. Doug has worked in design, manufacturing, and management for over 15 years. His design specialties include analog and digital HW design, software in multiple languages at both the embedded and PC level.
- Perry Howell has both a Bachelors and Masters in Electrical engineering. Perry has worked in design engineering and management for over 14 years. Perry's specialties include HW design of all types and embedded software for both application and signal processing. Perry has extensive knowledge of worldwide compliance standards as well as design for manufacturing.
- Steve Poulsen also has both a Bachelors and a Masters degree in electrical engineering. Steve has worked in design engineering for over 16 years. Steve was a part owner in a signal processing software company for a number of years before joining CSS. Steve has wide background including operating system device drivers, signal processing, analog and digital video systems, and application level software on all levels of computing platforms.



Communication
SYSTEMS SOLUTIONS

Design Capabilities

Hardware Design

- Services Conceptual design, schematic entry and PCB layout
- SMT and Through Hole PCB assembly in prototype to medium quantities
- Mechanical enclosure design
- Packaging Systems
- Embedded devices: TI DSP's: (Davinci, OMAP, C64x, C67x, C55x, C54x) ADI DSP's: (218x, 219x, Blackfin) Others:(MSP430, Arm7, Arm9, PIC, Atmel, 8051, GP MCU)
- TI 3rd Party Systems Development Partner
- Kontron comExpress embedded computer design partner

Software Design

- Embedded, Windows, Linux, DSP Bios, ThreadX, Device Drivers, and Qt4.x
- C/C++, Basic, Pascal, Fortran, Assembly, HTML, SQL, scripting, and most RTOS
- DSP and Micro-controller software experts
- Signal processing, Voice over IP (VoIP), Radio over IP (RoIP), control systems, real time systems, Audio, Control, and Data communications.
- Video systems design, TI DaVinci chipset, digital and analog. MPEG and H.264 encoding/decoding in real time video systems.

Certified Design
Partner Program





Communication
SYSTEMS SOLUTIONS

Major Projects

- **VoIP Public Safety Radio Dispatch System**

- Large PC apps for Windows and Linux
- SIP Telephony
- Custom 9.1 USB sound system
- Embedded comExpress computer platform
- Card cage with embedded network switch
- Multiple card designs for radio interfaces, Aux I/O, and audio channels. Embedded Linux



*The MindShare
dispatch console interface*

- Ongoing project providing feature migration, sales support, marketing support



Communication
SYSTEMS SOLUTIONS

Major Projects

- Scientific Instrumentation
 - HW and SW design for CO₂ measurement system running Embedded Linux and DSP
 - HW and SW for Laser based Doppler, in pipe, flow measurement system.
 - HW for Atmospheric layer monitoring system utilizing GPS signal anomalies.
 - High Speed DSP designs.

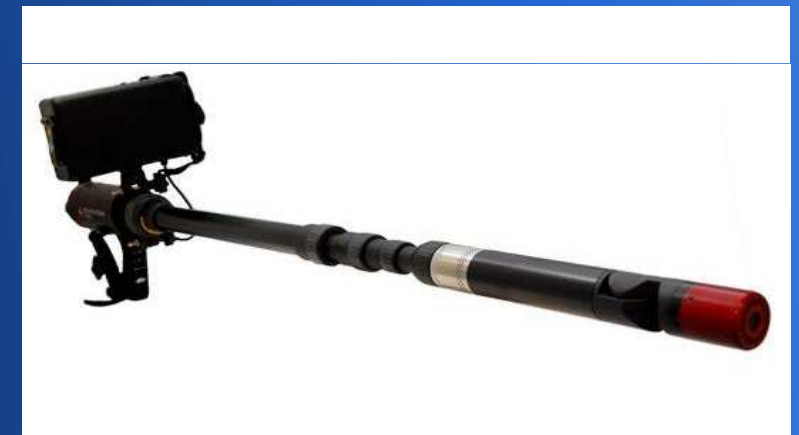




Communication
SYSTEMS SOLUTIONS

Major Projects

- Search and Rescue Video System
 - Telescoping camera system for looking for disaster victims
 - Color and low light camera options
 - Digital storage of video footage
 - Embedded Linux OS
 - Remote Video Display
 - Articulating Camera head





Communication
SYSTEMS SOLUTIONS

Major Projects

- In-Car Police Video System
 - Replacement Rear-View mirror
 - Recorded Camera behind 1-way glass
 - Optional forward and rear facing cameras
 - Embedded Linux
 - Embedded Video Screen
 - Event I/O turns camera on





Communication
SYSTEMS SOLUTIONS

Major Projects

- Interactive Video Kiosk: Sirius Satellite Display
 - Linux SDK: DM365
 - Application Support, Video Driver Support
 - Remote Content Upload via Cellular Network



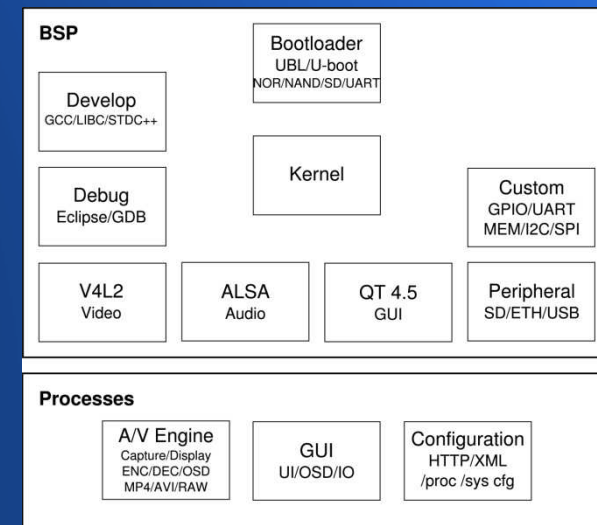
Update in progress -
ask a Best Buy Customer Specialist for information.





Major Projects

- Embedded Modules: Turn Key Reference
 - Argus Video Server
 - Embedded Hardware Module: Davinci, OMAP
 - Linux SDK: DM355/57, DM365/368, DM814x
 - QT OSD apps/drivers
 - Custom Linux kernels
 - Algorithms; Drivers; Apps





Communication
SYSTEMS SOLUTIONS

Contract Manufacturing

- Full SMT and Through Hole Production Facility
- Prototype and Low Volume
- Leaded and Lead Free
- Turn key production
- Procurement services
- Assembly
- MRP scheduled





Communication
SYSTEMS SOLUTIONS

TIME MACHINES

- Precision Digital Clocks
 - Power Over Ethernet sourced
 - Time is pulled from SNTP servers
 - Plug and play operation
 - 2.5" and 4" digit sizes
 - Red and Green options
 - Custom wood mounts





Communication
SYSTEMS SOLUTIONS

Conclusion

Communication Systems Solutions, LLC is the perfect on stop shop for all your electronic and design needs.

Please give us a call today to discuss your design.

Communication Systems Solutions, LLC

6030 S 58th St, STE C

Lincoln, NE 68516

(402) 261-8688

www.css-design.com

www.css-timemachines.com